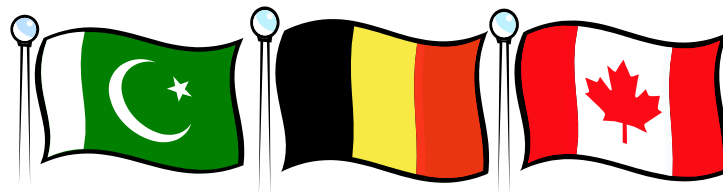




friendship force
INTERNATIONAL

The Friendship Force of the Sunshine Coast



21st. Birthday booklet



Foreward

When recording 21 years of club history it is necessary to pay tribute to all of the people who have put their efforts into the formation of the club, and developing it to the stage where it is recognized as a highly successful club in the world of Friendship Force in 2010.

It is impossible to name all of those people in this record and unfortunately only some will be seen named in relation to specific events. This 21 year record is never-the-less dedicated to all those members who over the years have done their bit for the club from its raw beginning to what it is today.

A special tribute must however be paid to the clubs first President, Glenys Marsh. She brought The Friendship Force of the Sunshine Coast to life and without her dedication and personal effort in 1988/89 we would not be celebrating this 21st anniversary in 2010.

The Beginning 1988/89

Glenys Marsh had moved to the Sunshine Coast from Cairns where she had been in The Friendship Force in that city.

In the latter part of 1988 she had discussions with Gerald Weekes Regional Representative FFI (South Pacific) about the possible formation of a Friendship Force Club on the Sunshine Coast and ultimately an exchange was proposed from Atlanta, Georgia to the Sunshine Coast.

A club was not in existence in early 1989 and Glenys placed advertisements in local newspapers seeking host homes from interested people.

WOULD YOU LIKE TO HOME HOST A VISITING AMERICAN

Room required for 12 mature American couples and 7 singles 14th to 20th April. Friendship Force is an International non-profit organization with clubs in 46 countries including 12 Australian and 16 in New Zealand. A new club is starting in this area. If you are interested in sharing your home and making a new friend from U.S.A. please contact G. Marsh on 47 2972

A club was founded at a meeting at her home in Sunshine Beach on the 15th March 1989, just weeks prior to the anticipated visit by 29 Ambassadors from Atlanta. The Club was to be the 12th Friendship Force Club formed in Australia.

At the Inaugural meeting the following were elected:-

President	Glenys Marsh
Vice President	Ken McGuire
Treasurer	Ann Main
Secretary	Helen Thomas
Assistant Secretary	Wendy Chandler

- * Club Fees to be \$5.00 per person.
- * Club Badges to be in the shape of Australia.
- * Ongoing meetings to be held at members homes.

The First Year 1989

FIRST IN-BOUND EXCHANGE APRIL 1989

ATLANTA GEORGIA TO SUNSHINE COAST QUEENSLAND

HOSTS

Glenys Marsh	Laurie Holmes
Wendy and Graeme Chandler	Gwen Torney
Barbara and Ken McGuire	Jean Loader
Mary Edwards (now Johnson)	Gloria and Henry Ball
Barbara and Clem Sowter	Helen and Vernon Gall
Ann Main	Dale Rivers
John Wain	Helen Thomas
Dianne Bitter	Moyna and Bruce Collett

27 Ambassadors arrived for the first exchange for a six-day stay. They insisted that they had to go to the Barrier Reef and Fraser Island as they would not be coming out this way again. They were told that this would be impossible in the time allowed but Glenys managed to meet their wishes. They were met in Brisbane and transported to Noosa for an overnight in motel type accommodation. At 6am the following morning they left for Bundaberg by bus to meet a boat to Lady Musgrave Island arriving home at 11pm when they were met by their hosts and taken home. A couple of days later they went to Fraser Island. There was no time for other planned activities and they had a combined welcome /farewell dinner at a local restaurant

THE AUSTRALIAN FESTIVAL OF FRIENDSHIP SURFERS PARADISE

14TH - 17TH SEPTEMBER 1989

POST FESTIVAL HOSTING BY THE SUNSHINE COAST CLUB

HOSTS for Festival

Alice and Keith Thompson	Glenys Marsh
Joyce Turner	Gary Vowles
Barbara and Ken McGuire	Joy and Ray Hawkins
John Rogers	Maureen Walker
Maria and Brendon Meagher	Helen Thomas
Irene and Charles Farquharson	Jean Loader
Ann Main	Helen and Vernon Gall
John Wain	Gloria and Henry Ball

Club Firsts

- * 1989 First Newsletter - June
- * 1989 First A.G.M. held November 12th at Avocado Gardens Restaurant - Burnett Street, Buderim.
- * 1991 First Licensing Agreement signed on 31st April between Friendship Force International and The Friendship Force of the Sunshine Coast
- * 1991 First attempted Out-Bound Exchange May Sunshine Coast to Seattle/Tacoma (Washington State) and Helena, Montana. This Exchange was cancelled due to lack of numbers but four members went unofficially. They were Wendy and Graeme Chandler, Mavis Rossiter and John Rogers.
- * 1992 First regular home for the club meetings was the Maroochydore Neighbourhood Centre at 5th Avenue on January 1992. All general meetings were held there from January till November 1997 inclusive.
- * 1992 First Newsletter in Sunseeker format was in January 1992.
- * 1992 First official Out-Bound Exchange was in March 1992. Sunshine Coast to New Plymouth and Christchurch, New Zealand. Exchange Director, Don McEwan. Ambassadors were Gloria and Don McEwan, Felicity and Jackie Sewell, Vat Hopkins, Janice Corey and Mavis Rossiter.
- * 1993 General Meeting 25-7~1993 resolved to incorporate. Certificate of Incorporation issued by Department of Consumer Affairs. No. IA-12542 on 21st October 1993.
- * 1994 First Youth Sponsorship of Trent Campbell to Global Youth conference at Gosford - Australia.
- * 1996 First trophy won at Australian conference February
- * 1996 First Bert's Safari
- * 1996 First club T Shirt introduced
- * 1998 First club to win ALL THREE trophies in one year at an Australian Conference - February 1998
- * 1998 First Australian club to host an African Exchange
- * 1998 First club member appointed FFI Field Representative - Gloria McEwan
- * 1999 10th Birthday Celebration

- * 1999 September Clubs first Bridge Builder exchange.
- * 2001 Clubs first member appointed as Nthn. District Administrator. Graeme Donaldson. 2001-2003
- * 2002 Club held the Australian National Conference in February.
- * 2003 February First "Host a Student Day" in conjunction with the Sunshine Coast University.
- * 2004 15th Birthday Celebration
- * 2005 World Friendship Day Celebrations
- * 2006 Gloria McEwan's long service honoured
- * 2007 Nth. Regional Fun Day –New Uniform – first exchange tree planting
- * 2008 First bi-monthly Picnic meeting – Bus trip to Stanthorpe Wineries etc.
- * 2009 First Christmas in July
- * 2010 21st Anniversary Celebrations

ELECTED OFFICE BEARERS

YEAR	PRESIDENT	VICE	SECRETARY	TREASURER
1989	Glenys Marsh	Ken McGuire	Helen Thomas Wendy Chandler	Ann Main
1990	Ken McGuire	Glenys Marsh	Wendy Chandler	Ann Main
1991	Ken McGuire	Charles Farquharson	John Rogers	Ann Main
1992	Clem Sowter	Charles Farquharson	John Rogers	Moyna Collett Keith Johnson
1993	Clem Sowter	Gloria McEwan	Ces Collins	Keith Johnson Dianne Schabel
1994	Gloria McEwan	Allen Humzy	Ces Collins	Dianne Schabel
1995	Gloria McEwan	Allen Humzy	Ces Collins	Dianne Schabel Bert Farmer
1996	Ces Collins	Allan Delaney Graeme Donaldson	Sybil Charlton	Bert Farmer
1997	Ces Collins	Graeme Donaldson	Sybil Charlton	Bert Farmer
1998	Graeme Donaldson	Sybil Charlton	Helen Kwong	Bert Farmer
1999	Graeme Donaldson	Sybil Charlton	Helen Kwong	Bert Farmer
2000	Sybil Charlton	Helen Kwong	Barbara Reid	Bert Farmer
2001	Helen Kwong	Heather Haythorpe	Barbara Reid	Bert Farmer

YEAR	PRESIDENT	VICE	SECRETARY	TREASURER
2002	Helen Kwong	Heather Haythorpe	Barbara Reid	Col Sakarzeski
2003	Heather Haythorpe	James Haxton	Gabrielle Donaldson	Col Sakarzeski
2004	Heather Haythorpe	James Haxton	Gabrielle Donaldson	Margaret Williams
2005	James haxton	Helen Roberts Gayle Macready	Gillian Dwyer	Bill Laws
2006	James Haxton	Gayle Macready	Gillian Dwyer	Bill Laws
2007	Gayle Macready	Gillian Dwyer	Bill Laws	Helen Kwong
2008	Gayle Macready	Gillian Dwyer	Bill Laws	Helen Kwong
2009	Gillian Dwyer	Ray Troyahn	Janice Collins	Bill Laws
2010	Gillian Dwyer	Ray Troyahn	Janice Collins	Bill Laws

Prior to October 1993 Incorporation, Office Bearers were elected in September but did not take office until the following January. Since 1993 Office Bearers have been elected in November and take office immediately, but are listed above for the following year.

International Inbound Exchanges

Year	Mth	Inbound Exchange From	Amb	Exchange Director
1989	Apr	Atlanta, U.S.A.	29	Glenys Marsh
	Sep	Post Aust. Festival	26	Glenys Marsh
1990	Apr	Charlotte N. Carolina	25	John Rogers
	Oct	Sacramento, California	27	Barbara Sowter
1991	Jul	Taupo, New Zealand	8	Mary Johnson,
	Nov	Lincoln, Nebraska	19	Wendy Chandler
1992	Mar	Mainz, Germany,	7	David Houseman
	Aug	Cleveland, Ohio	23	Barbara Sowter
	Oct	Atlanta, U.S.A	22	Don McEwan
1993	Apr	Springhill-W Coast Florida	16	Mary Johnson
1994	Mar	Miyagi, Japan	15	Ces Collins
	Nov	East Central, Florida	26	Judith Brunet
1995	Mar	Saitama, Japan	22	Lorna Humzy
	Sep	Hamilton, N.Z.	18	Felicity Sewell
	Nov	Derbyshire, England	12	Ces Collins
1996	Oct	Brussels, Belgium	12	Sybil Charlton
1997	May	Manawatu, N.Z.	10	Bob Crawford

Year	Mth	Inbound Exchange From	Amb	Exchange Director
	Aug	Osaka, Japan	24	Graeme Donaldson
	Oct	Springhill-W Coast Florida.	17	Bert Farmer
1998	Mar	Lee County-Suncoast Florida	25	Dorothy Stephens
	May	Missoula, Montana.	10	Peter Haythorpe
	Sep	Accra, Ghana	6	Clem Sowter
	Nov	Aichi, Japan	26	Helen Kwong
1999	Apr	Lancaster & Harrisburg	26	Gloria McEwan
	Jul	Napier	30	Lorna Humzy
	Aug	Taipei	18	Helen Kwong
	Sep	San Antonio Ballroom Dancers	19	Gabrielle Donaldson
	Nov	Moscow	19	Glenn Vickery
2000	Aug	Kumomoto	17	Shirley Sakrzewski
	Oct	Saitama, Japan	38	Graeme Donaldson
	Nov	Zutphen, Netherlands	22	Wendy Campbell
	Nov	Recife, Brazil	18	Kay Manthei
2001	May	West. Bay Of Plenty	14	Bernie Bill
	June	South Taranaki	18	John Shepherd
	Aug.	Marlborough	18	John Shepherd
	Nov.	Kiel	23	Kay Manthei
2002	April	Hamburg	17	Arnold Vandenhurk
	Aug.	Taipei	21	Arnold Vandenhurk
	Nov	Florida	16	Jean Ledwidge
2003	Mar	Calgary, Canada	16	Judi Gordon
	Oct.	Costa Rica	26	Peter Haythorpe
2004	April	Hertfordshire	23	Jan Collins
2005	Feb	Dubuque	21	Helen Kwong
	Mar	Connecticut	12	Bill Laws
	May	Greater Milwaukee	21	Shirley Sakrzewski
	Sep	Wisconsin	20	Jean Ledwidge
2006	July	Sacramento	16	Gayle Macready
	Sep	Rocky Mountains (Estes Park)	17	Judi Gordon
	Oct	Honolulu	11	Shirley Sakrzewski
2007	Mar	Kiev	18	James Macready
	Jul	Whangarei/Auckland Nthshore	34	Margaret Williams
	Oct	Minsk	13	Jean Ledwidge
	Nov	Tokyo	20	Arnold Vandenhurk
2008	Jun	Mundo Maya De Tuxtia Gutierrez	18	Gillian Dwyer

Year	Mth	Inbound Exchange From	Amb	Exchange Director
2008	Nov	Lugansk, Ukraine	27	Helen Kwong
	Nov	Netherlands	15	Ray Troyahn
2009	Oct	Leuven, Belgium	11	Judi Gordon
	Nov	Braunschweig-Piene Germany	27	John Gosney
	Oct	Post International Hosting	18	Jan Collins

International Outbound Exchanges

Year	Mth	International Clubs Visited	Amb	Exchange Director
1992	Mar	New Plymouth- Christchurch, N.Z.	7	Don McEwan
1993	Mar	Tokai-Tsu, Japan, All Australian,	23	Gloria & Don McEwan
1995	May	Derbyshire & Cleveland County, UK	18	Clem Sowter
1996	Nov	Chaing Mai Festival Manila.	23	Gloria McEwan
1997	Sep	N. Carolina, Texas S. Carolina USA	28	Graeme Donaldson
1998	Sep	Wairarapa, Taupo & Napier, N.Z (1 st Outbound All FFSC Members Only)	28	Ces Collins
1999	Mar	Saitama, Niigata, & Osaka Japan	28	Sybil Charlton
2000	Jun	S.Oregon/Chemnitz Arnhem	25	Helen Kwong
	Oct.	Paeroa-Hauraki, Wanganui, Marlborough,NZ	30	Graeme Donaldson
2001	May	Taipei/Sapporo	24	David Wood
	Sep	Richmond/Bingkampon Pioneer Vly. USA	11	Peter Haythorpe
2002	Apr	Gisborne/Wellington N. Auckland.NZ	29	Margaret Williams
	Aug	Norderstedt, Germany Hertfordshire, UK	18	Graeme Donaldson
2003	Mar	Osaka/Kumamoto	14	Helen Kwong
	Oct.	Brazil	13	Jan Collins
2004	Mar	Christchurch. Horowhenua, Hamilton	16	Helen Roberts
	Aug	Rocky Mountains, Colorado; Dubuque, Iowa and Louisville, Kentucky.	11	Helen Kwong
2005	Sep	Calgary CA, Wichata City and Kansas USA	15	Heather Haythorpe
2006	Sep	Lugansk (Ukraine) and Minsk (Belarus)	18	Helen Kwong
2007	Apr	Yamaguchi and Sendai-Miyagi Japan	15	Kay Manthei
	Jun	West of Scotland & Isle of Wight UK	20	Jim Haxton
2008	May	Izmir Turkey and Cornwall UK	6/19	Tom Ledwidge
	Aug	Missoula Montana, Columbia Cascade & Greater Sacramento USA	22	Heather Haythorpe
2009	Mar	Nelson, New Plymouth, Westn Bay o Plenty NZ	10	Gillian Dwyer
	Oct	Vietnam - Cambodia	6/13	Helen Kwong

Domestic Inbound Exchanges

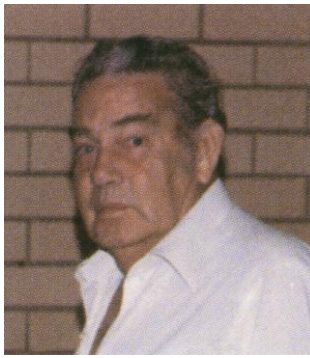
Year	Mth	Club	Amb	Exchange Director
1990	June	Tamworth	3	Ken Mcguire
1992	April	Ipswich	20	Ken Mcguire
	June	Mount Barker	40	Barbara Sowter
1993	Oct	Tweed Valley	30	Bert Farmer
	Oct	Bundaberg	9	Clem Sowter
1994		Tamworth	14	Sinah Hoskings
1996	June	Ipswich	24	Graeme Donaldson
1997	April	Currumbin-Gold Coast	27	Bert Farmer
	June	Kempsey	15	Barbara Reid
1999		Bundaberg	12	Gabrielle Donaldson
2000	Jan.	Brisbane	12	Judi Gordon
	June	Ipswich	14	Jan Collins
2003	July	Tamworth/Ipswich/Bris	38	Jim Haxton
2005	Jul	Perth	14	Graeme Donaldson
2009	Jul	Mt Gambier	18	Pam Ferguson
	Aug	Gold Coast	20	Patricia Barry

Domestic Outbound Exchanges

Year	Mth	Club Visited	Amb	Exchange Director
1992	Jan	Tamworth	3	Ken McGuire
	Sep	Ipswich	10	Ken McGuire
1993	Jun	Tweed Valley	29	Bert Farmer
1995	Jun	Bundaberg	17	Myfanwy Russell
1996	Mar	First Bert's Safari - Ipswich, Tamworth, Central Coast, Kempsey, Tweed Valley	21	Bert Farmer
1997	Feb	2nd Bert's Safari - Mt. Gambier, Murray Bridge, Casterton, Mt. Barker, Salisbury	22	Bert Farmer
	July	Currumbin-Gold Coast	34	Bert Farmer
2000	Feb	Safari - Adelaide, Murray Bridge and Casterton	25	Bert Farmer
2005	Mar	Hobart	25	Judi Gordon
2008	May	Bundaberg	35	Margaret Williams
2009	Jun	Blue Mountains	19	Ray Troyahn



Glenys Marsh 1989



Ken McGuire 1990-1



Clem Sowter 1992-3



Gloria McEwan 1994-5



Ces Collins 1996-7



Graeme Donaldson 1998-9



Sybil Charlton 2000



Helen Kwong 2001-2



Heather Haythorpe 2003-4



Jim Haxton 2005-6



Gayle Macready 2007-8



Gillian Dwyer 2009-10